

GPS cath®
Iliac covered stent

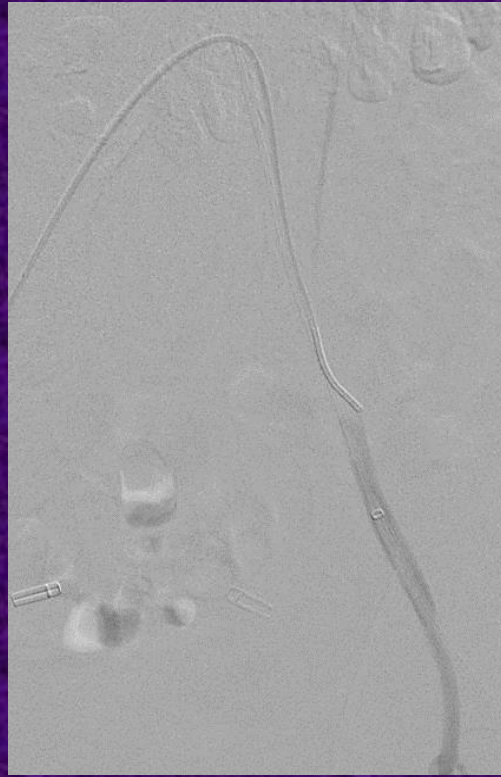
Dr. Kieran Mc Bride

Consultant Interventional Radiologist

Victoria Hospital, Kirkcaldy

NHS Fife, Scotland

Left common iliac occlusion



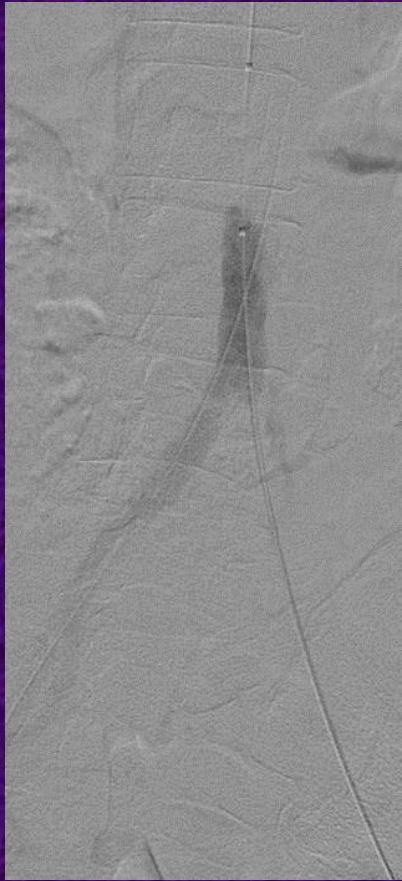
Failed left retrograde

Over-the-top recanalization

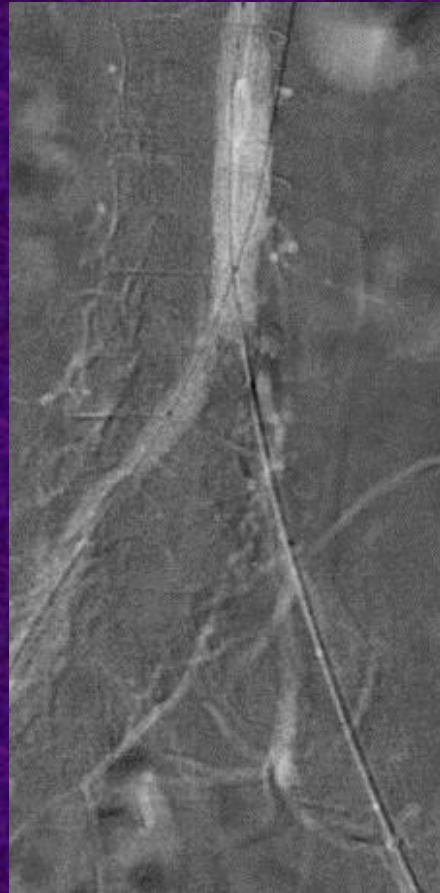
60yr female
Left claudication

Wire pulled through left sheath
Retrograde access to aorta

Kissing balloon iliac angioplasty



Left GPS angio



Right 7mm and left GPS 7mm PTA



Pre-stent iliac angioplasty

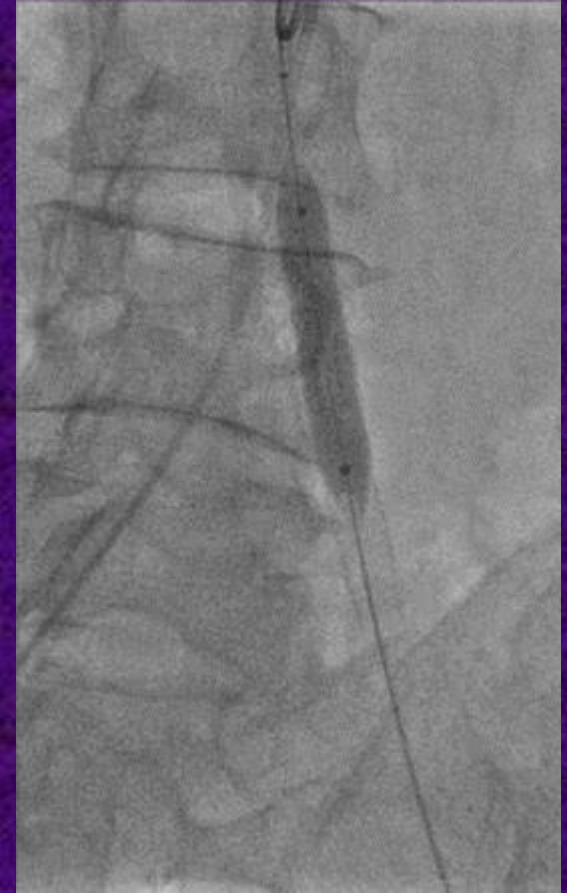


Kissing balloons at bifurcation and left iliac GPS
Left iliac 8mm X 5cm Viabahn covered stent

Post-stent angioplasty

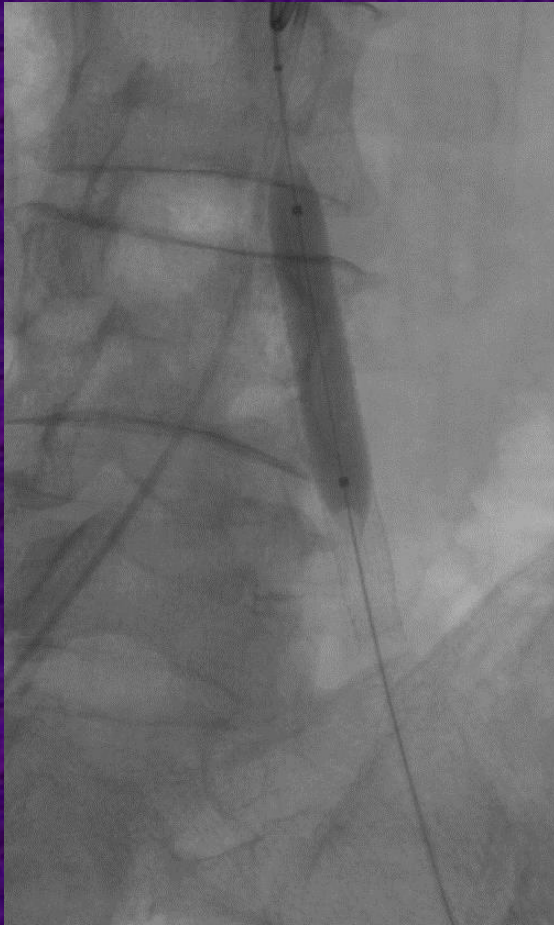


Residual waisting at proximal stent



Post dilatation 8mm GPS

Left iliac recanalization



Post dilatation 8mm GPS



Final appearance